

**Building in the country?  
Then you'll need**

***THE OASIS CLEARWATER***  
***Series 2000***

***AERATED WASTEWATER TREATMENT SYSTEM***



**Designed for living with this world... because it's the only world we have**

Developed in New Zealand for New Zealand conditions, the Clearwater Series 2000 quickly and efficiently turns **all your household waste water** into **high quality irrigation water**, saving your valuable water supply for more appropriate uses



## Engineered to perfection!

### **Why is the Clearwater Series 2000 Technology so effective?**

The Clearwater Series 2000 system is not a septic tank! It is an aerated waste water treatment system comprising **five** stages of treatment. Liquid flows through the system by hydraulic disbursement.

Waste water first enters a **pretreatment, settlement chamber**. It then flows into a **secondary settlement chamber**.

From here it passes via a **revolutionary ZABEL A300 high performance filter**, where further biological and mechanical filtration occurs, into the **central aeration chamber**.

In the central aeration chamber, **thousands of tiny air bubbles** are created by our exclusive Series 2000 fine air diffuser assembly, **constantly mixing the contents and providing essential oxygen** for the aerobic digestion and cleansing process.

The process continues as the water is introduced to our **unique Clarifier unit** prior to flowing into the pump out chamber.

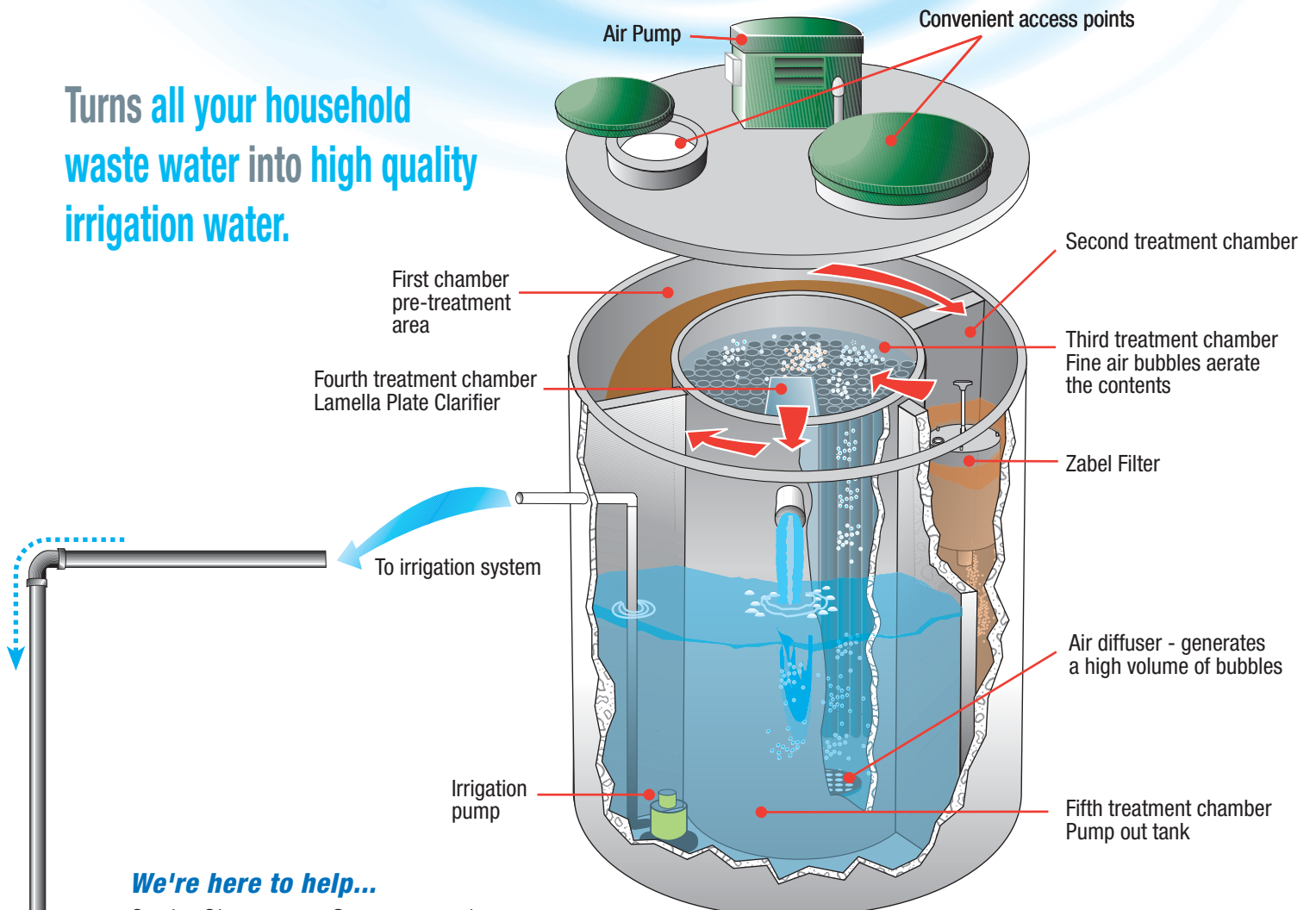
The system is complete with a high quality system malfunction alarm.

### **Why consider an OASIS SERIES 2000 treatment system?**

- *Oasis Series 2000 System treats effluent to a level unobtainable by septic systems.*
- *Oasis Series 2000 System produces a high quality output -Ideal in areas with high water tables, poor soil conditions and where the environment is at risk.*
- *The Oasis Series 2000 System is highly energy and maintenance efficient. Overall costs are less than other on site systems.*
- *The Oasis Series 2000 System is an established, proven technology backed by a New Zealand company with over 15 years experience in waste water treatment plants.*
- *We install every aspect of the plant, including the irrigation system.*



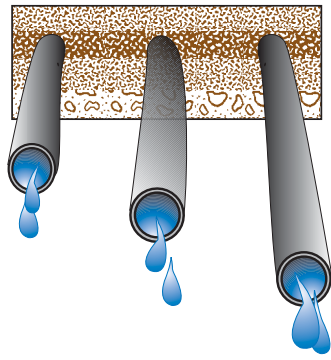
**Turns all your household waste water into high quality irrigation water.**



***We're here to help...***

Oasis Clearwater Systems and our Distributors are dedicated to helping you solve your on-site waste water problems. We are firmly committed to manufacture the highest quality products to ensure the protection of our environment. Our systems are designed to Internationally recognised performance standards.

Pressure compensated dripper lines ensures an even delivery of moisture along entire irrigation length.



*With the high quality of the Clearwater Series 2000 end product, several discharge options are available - Including grasslands, shrubs and trees.*



## Advantages of the Oasis Series 2000 System

### Home owners

- Protects water quality and enhances owners' quality of life.
- Saves water, money and protects our environment.
- Low operating and maintenance costs.
- Durable precast concrete, no plastic or fibreglass.

### Councils and Developers

- Highly reliability, low maintenance systems.
- Reduced operating costs.
- Increased public health protection.

### Engineers

- Proven design and Engineering.
- Reliable performance, reduced costs.
- Systems for domestic and commercial applications.
- Ideal for failed system renovation.

### Contractors and Installers

- One chamber - one hole - one connection.
- Low maintenance, full range of spares available.
- On going manufacturer backup.

## Technical specifications

- |  |             |
|--|-------------|
| • Primary Pre-treatment chamber                | 3500 litres |
| • Secondary Pre-treatment chamber              | 750 litres  |
| • Aeration and Lamella Plate Clarifier chamber | 2150 litres |
| • Pumpwell                                     | 1050 litres |
| • Total operating capacity                     | 7450 litres |
| • Total holding capacity                       | 9400 litres |
| • Control panel - Audio and visual alarm       |             |
| • Purifying aerator                            | 80 Watts    |
| • Tank construction - All concrete             |             |

### Tank Dimensions

- |            |            |
|------------|------------|
| • Height   | 2500 mm    |
| • Diameter | 2500 mm    |
| • Weight   | 7.5 Tonnes |

Consistent with our policy of product improvement, we reserve the right to alter specifications without notice.

### Certifications

N.Z TP 58 APPROVAL - 3rd Edition  
AUS/NZS 1547.2000 - On Site Domestic Waste Water  
AUS/NZS 1546 s 1: 1998 - Septic Tank Manufacture

## Our company and our capabilities

Oasis Clearwater Environmental Systems has been pioneering onsite wastewater treatment since 1990. Our team of qualified professionals have many years of combined experience designing and developing innovative technology and systems to meet demanding standards for waste water treatment.

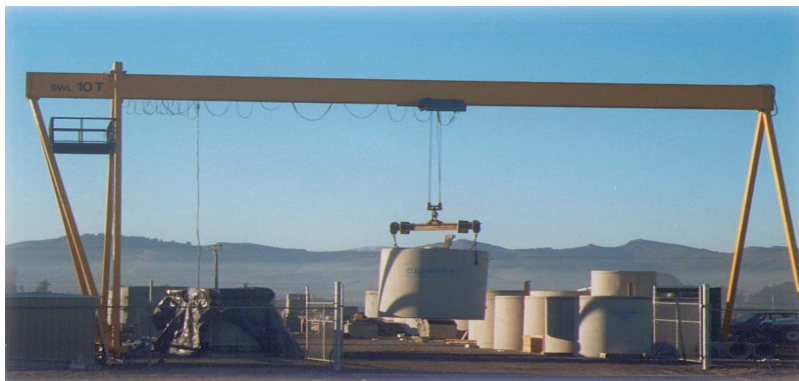
We have also established close working relationships with several leading international authorities and manufacturers of similar equipment to complement our knowledge.

### We offer a full range of services including

Design and construction.  
Liaison with local and regional councils.  
Upgrading of existing systems.  
Maintenance programmes.  
Domestic and commercial applications.

## Committed to quality

To ensure constant quality, our products are manufactured, assembled and fitted out at our own concrete product manufacturing plant.



### Christchurch Head Office:

P.O.Box 16-276, Hornby, Christchurch 8441, New Zealand  
Phone: 03-344 0262 • Fax: 03-344 0267  
Email: office@oasisclearwater.co.nz  
Website: www.oasisclearwater.co.nz

**Distributors Nationwide: Phone 0800 48 48 49**

### Your authorised local distributor

